



IntellSiG
INTELLIGENCE TECHNOLOGIES

PRODUCED BY EXPERTS FOR
EXPERTS!

RAVEN – Wireless & IoT Analyzer

RAVEN is a professional, IoT and wireless threat analysis system designed to expose unauthorized access points, connected clients and covert wireless activity in real time.

The system provides real-time visibility into modern wireless and IoT environments, enabling detection and analysis of unauthorized access points, connected clients and suspicious activity.

The **Raven** is hand-held with total weight is 1.5 kilograms, placed in an ergonomic case with a 7-inch touch screen, 1 USB connector, RJ45 connector, Omni multi antennas, directional antenna, as well as other accessories included in the kit. The system works through a direct connection to the local electricity or through a battery that provides power for 5 hours of independent operation.

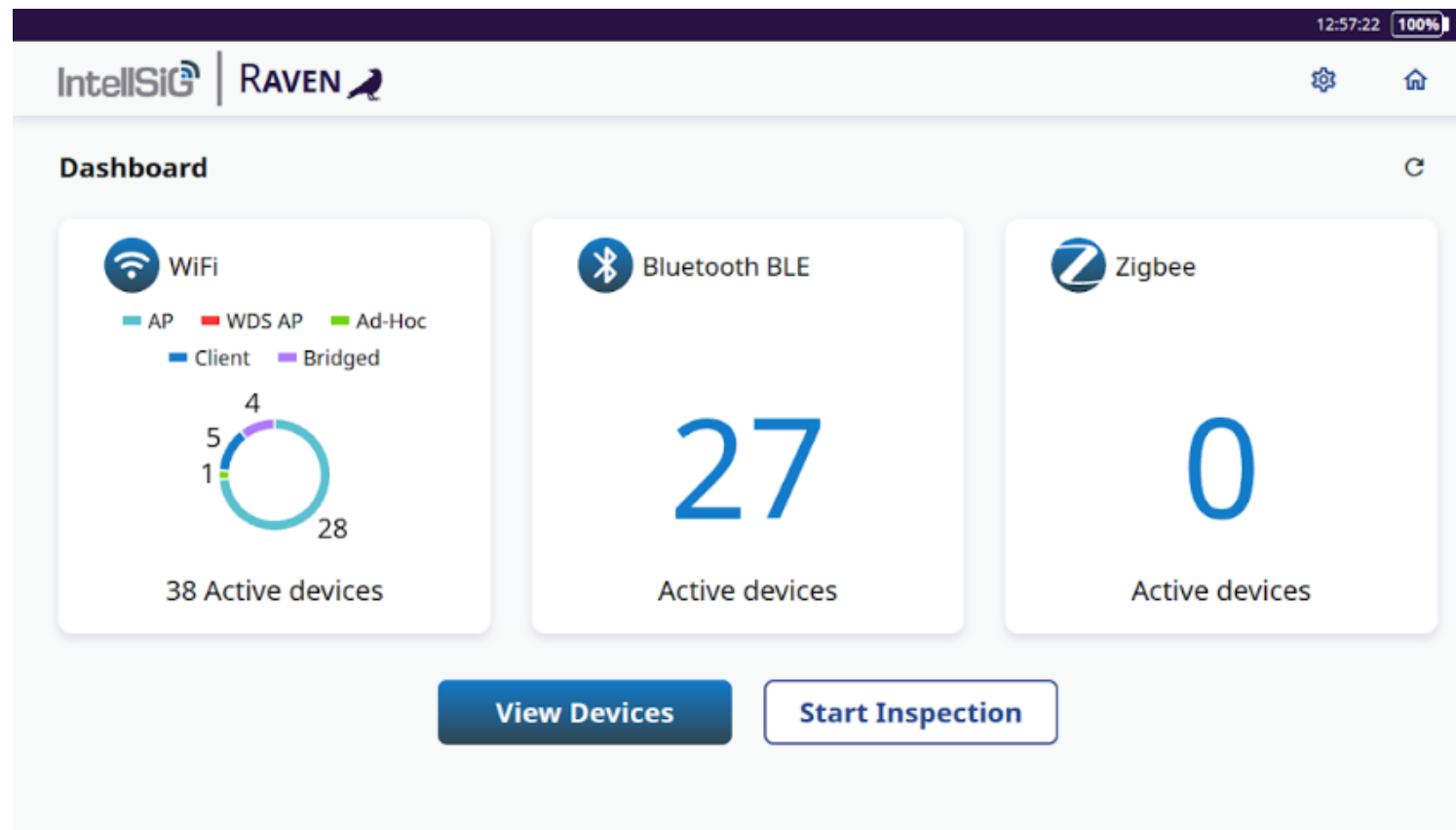
Target Users

TSCM Technician · Government · Military · Law Enforcement · SWAT units · VIP Protection



Key Capabilities:

- Detection of all access points in the environment
- Identification of connected clients per AP
- MAC Address, RSSI, Upload / Download analysis
- Rogue & Hidden AP detection
- Suspicious client identification
- Known / Unknown / Suspicious classification
- RSSI graph for physical device localization
- Supported Technologies
- Wi-Fi 2.4 / 5 / 6 / 6E · Bluetooth · BLE · Zigbee



| Name | Device | Signal | # Clients | Last Seen | Active |
|-----------------------------|--------------|--------|-----------|------------------|--------|
| Google LLC | BTLE Device | -23 | 0 | 10/12/2025 11:59 | ✓ |
| HP, Inc. Printer network... | BTLE Device | -27 | 0 | 10/12/2025 11:59 | ✓ |
| Google LLC | BTLE Device | -30 | 0 | 10/12/2025 11:59 | ✓ |
| B4:8C:9D:01:99:05 | Wi-Fi Client | -32 | 0 | 10/12/2025 11:59 | ✓ |
| 6E:05:C9:10:32:4E | Wi-Fi Client | -32 | 0 | 10/12/2025 11:59 | ✓ |
| 3A:CD:31:AE:A7:F5 | BTLE Device | -36 | 0 | 10/12/2025 11:59 | ✓ |
| Apple, Inc. | BTLE Device | -36 | 0 | 10/12/2025 11:59 | ✓ |
| Microsoft | RTI F Device | -39 | 0 | 10/12/2025 11:59 | ✓ |

| Device Details | | | | | | |
|-------------------|--|---------|------------------|--------|---------------|--------|
| Device Name | Boon VoLTE-701F | | | | | |
| Mac Address | A4:D4:B2:76:70:1F | | | | | |
| Domain | IEEE802.11 | | | | | |
| Last seen | 10/12/2025 13:07:34 | | | | | |
| Channel | 10 | | | | | |
| Manufacturer | Shenzhen MeiG Smart Technology Co.,Ltd | | | | | |
| Signal Strength | -48 | | | | | |
| Client Of: | Boon VoLTE-701F | | | | | |
| Clients | | | | | | |
| Name | Signal | Packets | Last Seen | Active | Select Status | |
| E0:D8:C4:6E:46:16 | ██████████ | 29+/44+ | 10/12/2025 13:07 | ✓ | Approved | Threat |

| Manufacturer: Shenzhen MeiG Smart Technology Co.,Ltd | | | | | | |
|--|------------|---------|------------------|--------|---------------|--------|
| Signal Strength: -50 | | | | | | |
| Client Of: Boon VoLTE-701F | | | | | | |
| Clients | | | | | | |
| Name | Signal | Packets | Last Seen | Active | Select Status | |
| E0:D8:C4:6E:46:16 | ██████████ | 55+/58+ | 10/12/2025 13:08 | ✓ | Approved | Threat |
| 56:DE:1B:95:F1:18 | ██████████ | 0+/1+ | 10/12/2025 13:07 | ⚠ | Approved | Threat |
| 1A:6F:EB:FA:1F:1C | ██████████ | 91+/83+ | 10/12/2025 13:08 | ✓ | Approved | Threat |
| 42:A2:75:A3:08:1F | ██████████ | 2+/15+ | 10/12/2025 13:08 | ✓ | Approved | Threat |
| C0:35:32:47:40:23 | ██████████ | 1+/6+ | 10/12/2025 13:07 | ⚠ | Approved | Threat |



